

4

3

2

1

REPAIR PARTS KITS

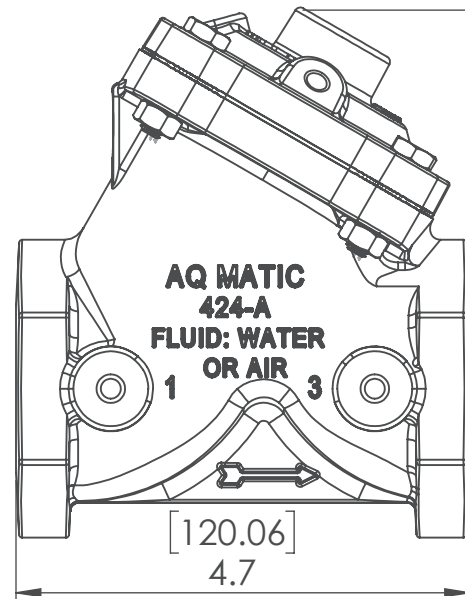
DESCRIPTION	PART NO.		
DIAPHRAGM & SEALS KIT CONSISTS OF ITEM NO'S 3,5,6,8,9,12,15,16,18 (3,5,6,7,8,13,14, 16)	1070069 (424-RA)	1070082 (424-RAE)	1070094 (424-RAV)
	BUNA N INCLUDES DIAPHRAGM 1074222 (424-FB)	E.P.D.M. INCLUDES DIAPHRAGM 1074222 (424-FB)	FKM INCLUDES DIAPHRAGM 1074224 (424-FV)
INT. PARTS KIT (NORM. OPEN) CONSISTS OF STANDARD ITEM NO'S 4,7,10,11(2),19 (4,9, 10(2),17)	1070119 (424-RF)		
SEAT (ITEM NO. 2)	1074245 (424-MO)		

REVISIONS				
ECN	REV.	DESCRIPTION	DATE	APP'D
1252	V	NEW VALVE AND COVER CASTINGS	5/9/18	
1667	W	UPDATE DIAPHRAGM PLATE ASSEMBLY VIEW	3/3/20	

ASSEMBLY TOOLS

DESCRIPTION	PART NO.
FOR INSTALLATION AND REMOVAL OF SEAT (ITEM #2) (TOOL NOT SHOWN)	1074247 (424-MT)
FOR INSTALLATION AND REMOVAL OF SHAFT GUIDE (ITEM #9) (TOOL NOT SHOWN)	1074227 (424-GT) OR 1.125 HEX SOCKET

NO.	DESCRIPTION	STD	PART NO.	QTY.
1	BODY	CAST IRON	1-1/4" NPT	1
			1-1/2" NPT	
	CAST BRASS	1-1/4" NPT	1074196 (424-A5)	
		1-1/2" NPT	1074199 (424-A6)	
2	SEAT - BRASS (REQ'S ASSY TOOL)	*	1074190 (424-AB5)	1
3	HEX NUT (1/4-28)	*	1074193 (424-AB6)	1
4	DISC PLATE	SS	1074238	1
5	O-RING	BUNA N	1071678 (ORB-028)	1
		E.P.D.M.	15243	
		FKM	1071793 (ORV-028)	
6	DISC	BUNA	1074232 (424-J)	1
		E.P.D.M.	1074233 (424-JE)	
		FKM	1074236 (424-JV)	
		HYCAR	1074234 (424-JH)	
7	GASKET	COPPER	1074252 (424-R)	1
8	O-RING	BUNA N	1071695 (ORB-132)	1
		E.P.D.M.	1071734 (ORE-132)	
		FKM	1071806 (ORV-132)	
9	SHAFT GUIDE (REQ'S ASSY TOOL)	SS	1074226	1
10	DIAPHRAGM PLATE	SS	43943	2
11	HEX NUT (5/16-24)	PLATED STEEL	1263853	1
12	CAP	CAST IRON	1074202 (424-C)	1
		CAST BRASS	1074206 (424-CB)	
13	HEX SCREW	PLATED STEEL	1072399 (SCZ-0007)	4
14	DIAPHRAGM	BUNA N	1074222 (424-FB)	1
		FKM	1074224 (424-FV)	
15	HEX NUT	PLATED STEEL	1071656 (NUZ-0008)	4
16	O-RING	BUNA N	1071689 (ORB-110TC)	1
		E.P.D.M.	1071726 (ORE-110TC)	
		FKM	1239021 (ORV-110)	
17	COMBINATION SHAFT (NORMALLY OPEN)	*	44013 (424-L)	1

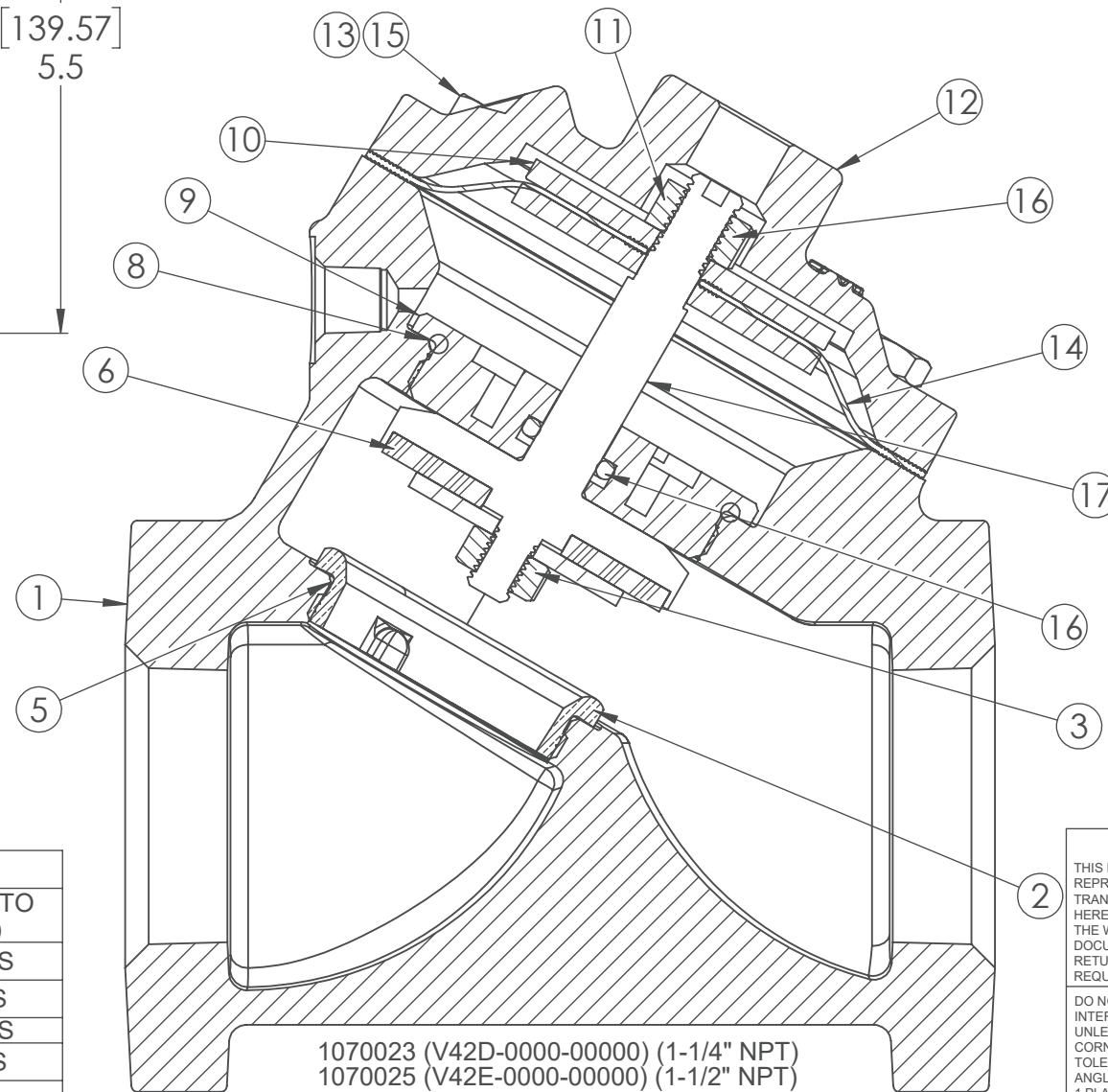


139.57
5.5

120.06
4.7

APPLY LOCTITE 565 HERE "X" SIDE

APPLY LOCTITE 565 HERE
DO NOT APPLY LOCTITE TO O-RING SEALS



1070023 (V42D-0000-00000) (1-1/4" NPT)
1070025 (V42E-0000-00000) (1-1/2" NPT)

NORMALLY OPEN (STANDARD)

THIS DOCUMENT IS SOLELY THE PROPERTY OF AQ-MATIC REPRODUCTION, USE DISCLOSURE, OR TRANSMISSION OF THIS DOCUMENT OR DETAILS CONTAINED HEREIN, IN PART OR IN WHOLE, IS PROHIBITED WITHOUT THE WRITTEN CONSENT OF AQ-MATIC ENGINEERING. THIS DOCUMENT AND ANY COPIES SHALL BE RETURNED TO AQ-MATIC UPON WRITTEN REQUEST.

DO NOT SCALE DRAWING. DIMS. ARE IN INCHES [mm] INTERPRET DIMS AND TOLERANCES PER ASME Y14.5M -1994 UNLESS OTHERWISE SPECIFIED:
CORNER FILLETS R.005-.020 [.127-.508]
TOLERANCES:
ANGLES : ±1°
1 PLACE .X: ±.015 [0.38]
2 PLACE .XX: ±.01 [0.3]
3 PLACE .XXX: ±.005 [0.13]

THE COMPONENT, PART, OR ASSEMBLY DESCRIBED IN THIS DOCUMENT MUST COMPLY WITH THE EU (EUROPEAN UNION) DIRECTIVE: RoHS DIRECTIVE 2011/65/EC.

THIRD ANGLE PROJECTION

APPROVALS DATE

DRAWN TRK 5/9/18

CHECKED BY

APPROVED



CATALOG SHEET, 424
DIAPHRAGM VALVE STANDARD MODEL

B	DWG NO. 1077614	REV. W
SCALE	SOLIDWORKS FORMAT	SHEET 1 OF 2

4

3

2

1

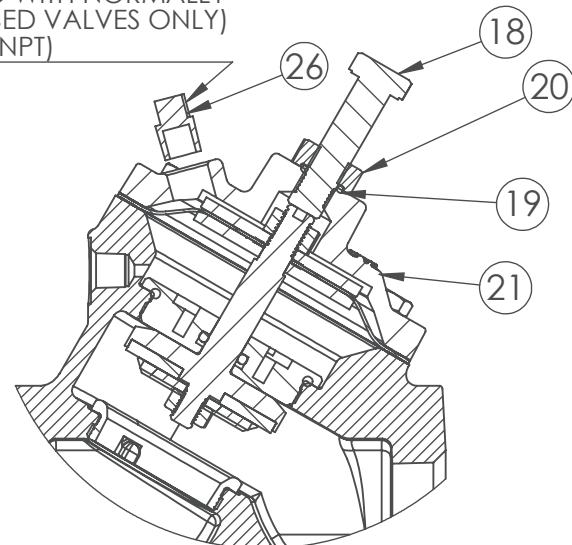
4

3

2

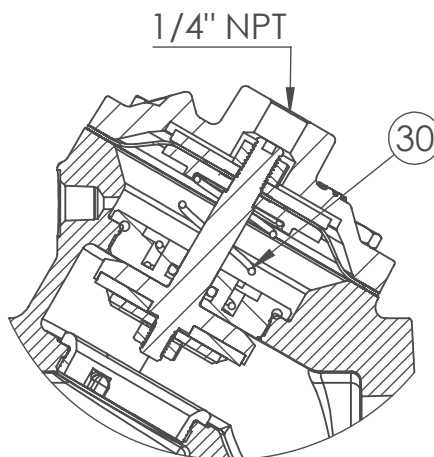
1

(USED WITH NORMALLY CLOSED VALVES ONLY)
(1/8" NPT)



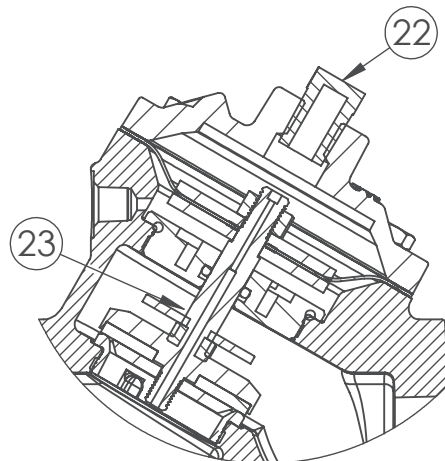
1072720 (V42D-0010-00000) (1-1/4" NPT)
1070028 (V42E-0010-00000) (1-1/2" NPT)

LIMIT STOP



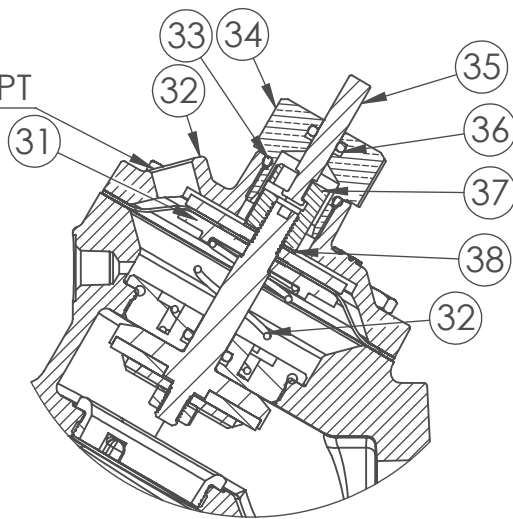
1072715 (V42D-0001-00000) (1-1/4" NPT)
1070027 (V42E-0001-00000) (1-1/2" NPT)

SPRING ASSIST OPEN



1072723 (V42D-0030-00000) (1-1/4" NPT)
1070026 (V42E-0030-00000) (1-1/2" NPT)

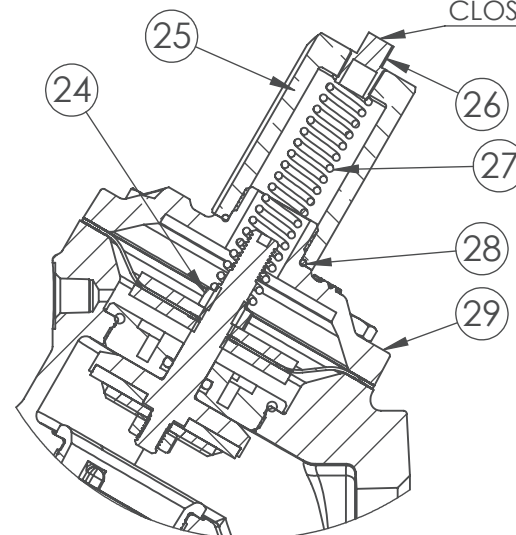
NORMALLY CLOSED



1072722 (V42D-0021-00000) (1-1/4" NPT)
1072804 (V42E-0021-00000) (1-1/2" NPT)

POSITION INDICATOR

(USED WITH NORMALLY CLOSED VALVES ONLY)



1072716 (V42D-0002-00000) (1-1/4" NPT)
1072792 (V42E-0002-00000) (1-1/2" NPT)

SPRING ASSIST CLOSED

REVISIONS				
ECN	REV.	DESCRIPTION	DATE	APP'D
		SEE PAGE 1 FOR CHANGES		

NO	DESCRIPTION	STD	PART NO.	QTY.
LIMIT STOP MODEL				
18	SCREW	*	1072362 (SCS-0031)	1
19	O-RING	BUNA-N	* 1071668 (ORB-012)	1
20	NUT, STOP, 3/8-24	*	1077534 (400-H)	1
21	CAP	CAST IRON	* 1074210 (424-CCC)	1
		CAST BRASS	1074213 (424-CCCB)	
NORMALLY CLOSED MODEL				
22	PIPE PLUG (1/4" NPT)	PLATED STEEL	* 1071918 (PLZ-0008)	1
		BRASS	1071904 (PLB-0009)	
23	COMBINATION SHAFT (NORMALLY CLOSED)	*	44013-02 (424-LL)	1
SPRING ASSIST CLOSED MODEL				
24	CENTERING NUT	*	1074276 (424-X)	1
25	RETAINER NUT	BRASS	* 1074274 (424-TT)	1
26	PIPE PLUG (1/8" NPT)	PLATED STEEL	* 1071917 (PLZ-0005)	1
		BRASS	1071903 (PLB-0007)	
27	SPRING	*	1074270 (424-SS)	1
28	O-RING	BUNA-N	* 1071674 (ORB-020)	1
29	CAP	CAST IRON	* 1074208 (424-CC)	1
		CAST BRASS	1074209 (424-CCB)	
SPRING ASSIST OPEN MODEL				
30	SPRING	*	1236766	1
31	DIAPH. PLATE, 424	SS	* 43728	1
POSITION INDICATOR MODEL				
32	CAP	CAST IRON	* 1074217 (424-CF)	1
		CAST BRASS	* 1074218 (424-CFB)	
33	O-RING	BUNA-N	* 1071692 (ORB-116)	1
34	SHAFT GUIDE BUSHING	BRASS	* 1074121 (421-GF)	1
35	INDICATOR SHAFT	SS	* 1074251 (424-PM)	1
36	O-RING	BUNA-N	* 1071688 (ORB-108TC)	1
37	TOP NUT	BRASS	* 1074272 (424-TB)	1
38	LOCKWASHER	*	1073590 (WAS-0007)	1

TORQUE TABLE		
ITEM #	DESCRIPTION	TORQUED TO (+/- 10%)
20	NUT, STOP	90 IN/LBS
24	CENTERING NUT	90 IN/LBS
25	RETAINER NUT	120 IN/LBS
34	SHAFT GUIDE BUSHING	120 IN/LBS
37	TOP NUT	90 IN/LBS

REPAIR PARTS KITS	
DESCRIPTION	PART NO.
INT. PARTS KIT (LIMIT STOP) CONSISTS OF STANDARD ITEM NO'S 18,19,20	1074242 (424-LS)
INT. PARTS KIT (NORM. CLOSED) CONSISTS OF STANDARD ITEM NO'S 4,9,11(2),23	1070130 (424-RG)
INT. PARTS KIT (SPRING ASSIST CLOSED) CONSISTS OF STANDARD ITEM NO'S 24,27,28	1074265 (424-SC)
INT. PARTS KIT (SPRING ASSIST OPEN) CONSISTS OF STANDARD ITEM NO'S 7,30,31	1074268 (424-SO)
INT. PARTS KIT (POSITION INDICATOR) CONSISTS OF STANDARD ITEM NO'S 33THRU 38	1074249 (424-PI)

CONVERSION KITS	
DESCRIPTION	PART NO.
CONVERSION KIT (LIMIT STOP) CONSISTS OF STANDARD ITEM NO'S 18,19,20,21	1074243 (424-LSC)
CONVERSION KIT (SPRING ASSIST CLOSED) CONSISTS OF STANDARD ITEM NO'S 24 THRU 29	1074266 (424-SCC)
CONVERSION KIT (SPRING ASSIST OPEN) CONSISTS OF STANDARD ITEM NO'S 7,9,30,31	1074269 (424-SOC)
CONVERSION KIT (POSITION INDICATOR) CONSISTS OF STANDARD ITEM NO'S 32 THRU 38	1074250 (424-PIC)

THE COMPONENT, PART, OR ASSEMBLY DESCRIBED IN THIS DOCUMENT MUST COMPLY WITH THE EU (EUROPEAN UNION) DIRECTIVE: RoHS DIRECTIVE 2011/65/EC.

THIS DOCUMENT IS SOLELY THE PROPERTY OF AQ-MATIC REPRODUCTION, USE DISCLOSURE, OR TRANSMISSION OF THIS DOCUMENT OR DETAILS CONTAINED HEREIN, IN PART OR IN WHOLE, IS PROHIBITED WITHOUT THE WRITTEN CONSENT OF AQ-MATIC ENGINEERING. THIS DOCUMENT AND ANY COPIES SHALL BE RETURNED TO AQ-MATIC UPON WRITTEN REQUEST.

DO NOT SCALE DRAWING. DIMS. ARE IN INCHES [mm]
INTERPRET DIMS AND TOLERANCES PER ASME Y14.5M -1994
UNLESS OTHERWISE SPECIFIED:
CORNER FILLETS R.005-.020 [0.127-.508]
TOLERANCES:
ANGLES: ±1°
1 PLACE .X: ±.015 [0.38]
2 PLACE .XX: ±.01 [0.3]
3 PLACE .XXX: ±.005 [0.13]

THIRD ANGLE PROJECTION	
APPROVALS	DATE
DRAWN TRK	5/9/18
CHECKED BY	
APPROVED	



CATALOG SHEET, 424 DIAPHRAGM VALVE STANDARD MODEL		
B	DWG NO. 1077614	REV. W
SCALE	SOLIDWORKS FORMAT	SHEET 2 OF 2